

TITLE:
301-140-RPM Panama Steering Light, dimmable,
on a 400-038 PE std base

DRAWING NO.: 301-140-RPM-AA REV. NO.: 1 SIZE: A3 DRAWN BY: Thomas

SCALE: 1 : 1 TOLERANCES: DS/ISO 2768-f REVIEWED BY: CREATION DATE: 29-10-2021

MATERIAL DESCRIPTION: (20µ) Silver anodized according to EN ISO 7599 (50µ) Black anodized according to MIL-A 8625F

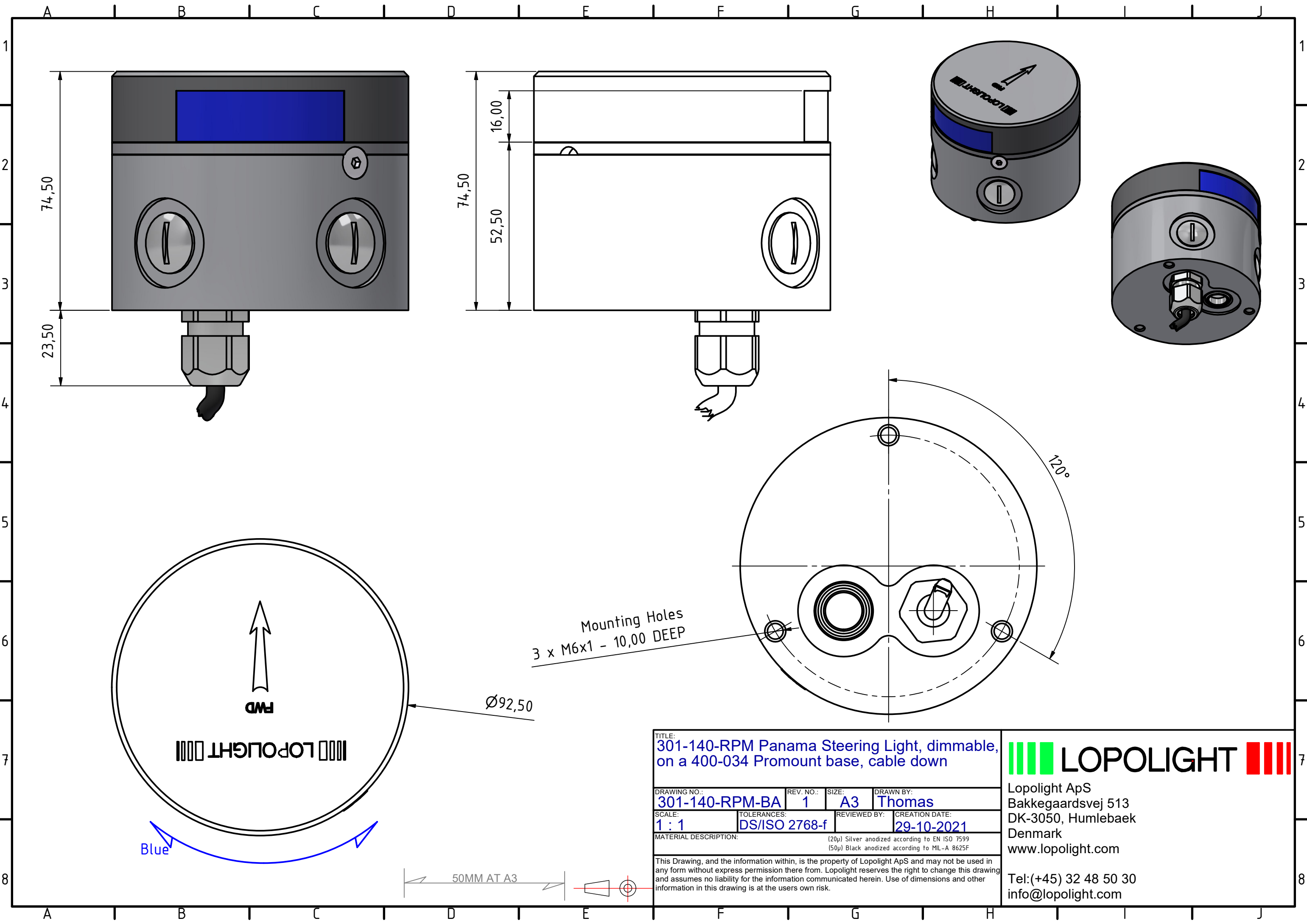
This Drawing, and the information within, is the property of Lopolight ApS and may not be used in any form without express permission there from. Lopolight reserves the right to change this drawing and assumes no liability for the information communicated herein. Use of dimensions and other information in this drawing is at the users own risk.



Lopolight ApS
Bakkegaardsvej 513
DK-3050, Humlebaek
Denmark
www.lopolight.com

Tel: (+45) 32 48 50 30
info@lopolight.com

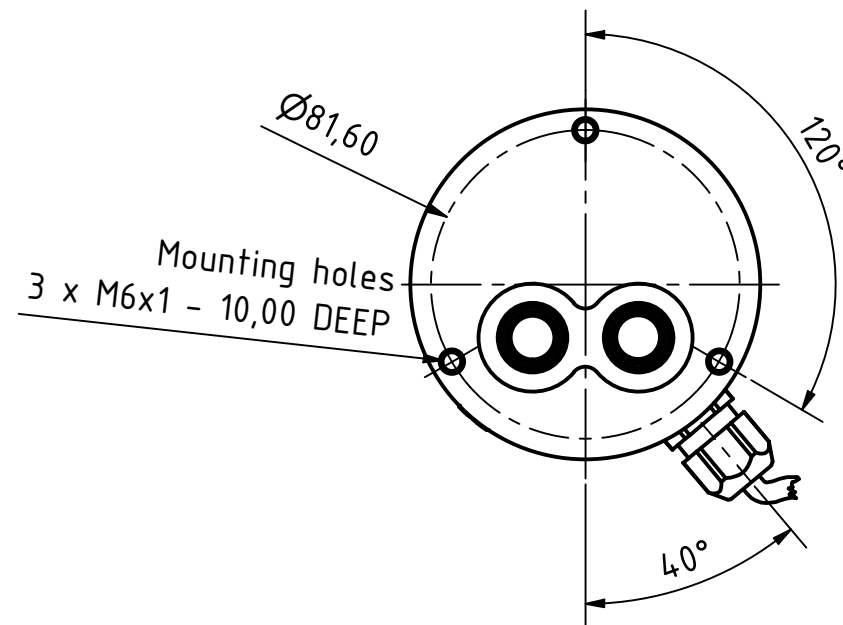
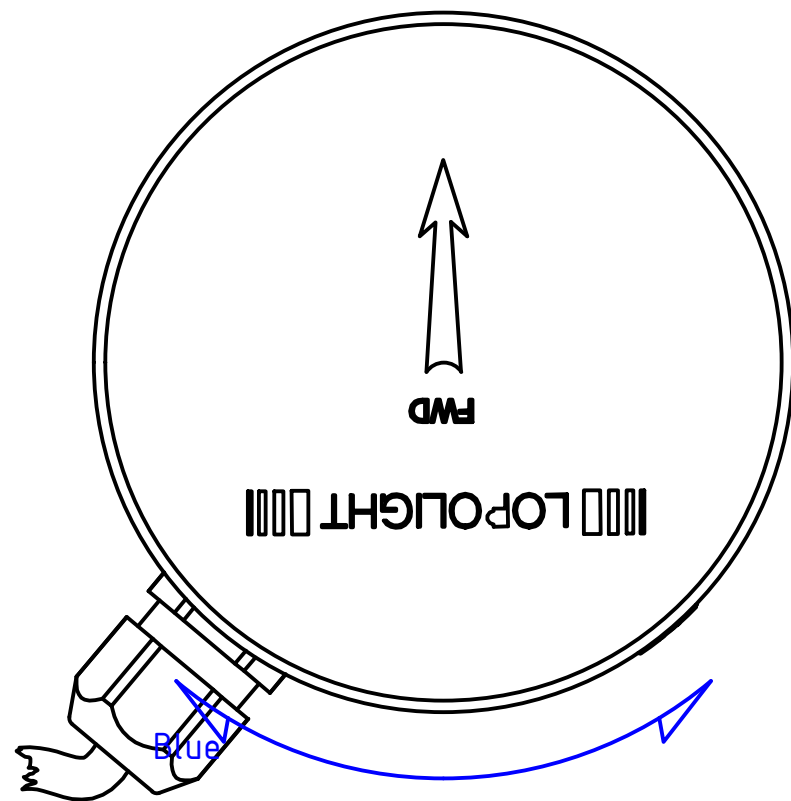
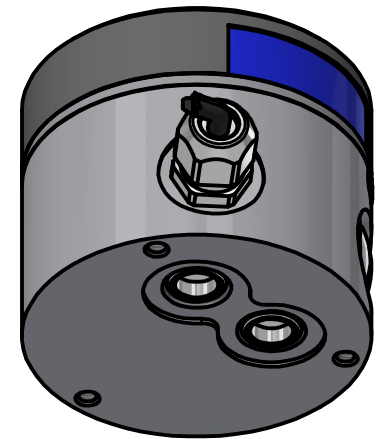
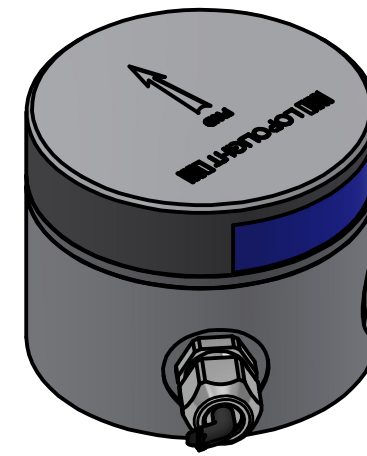
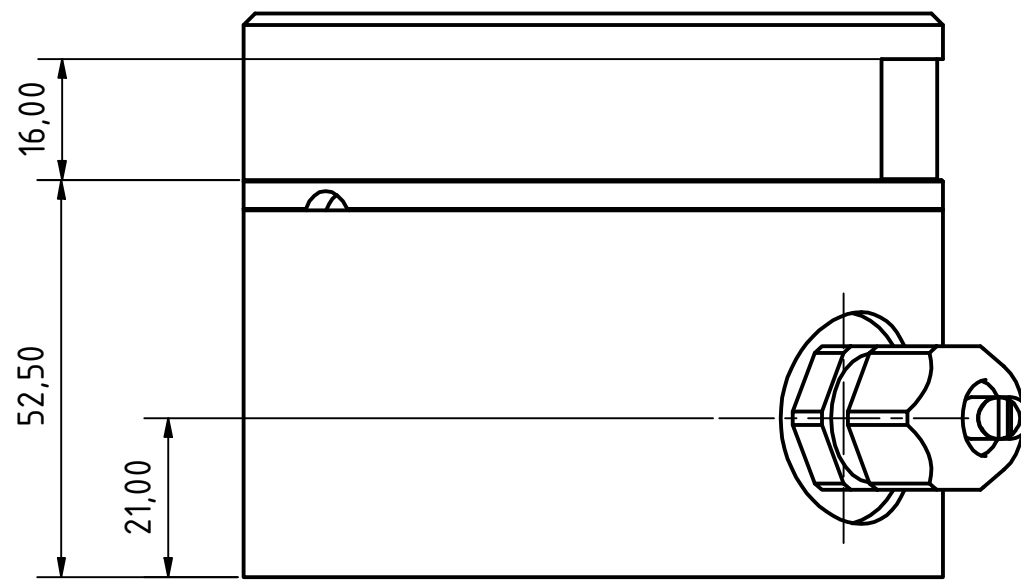
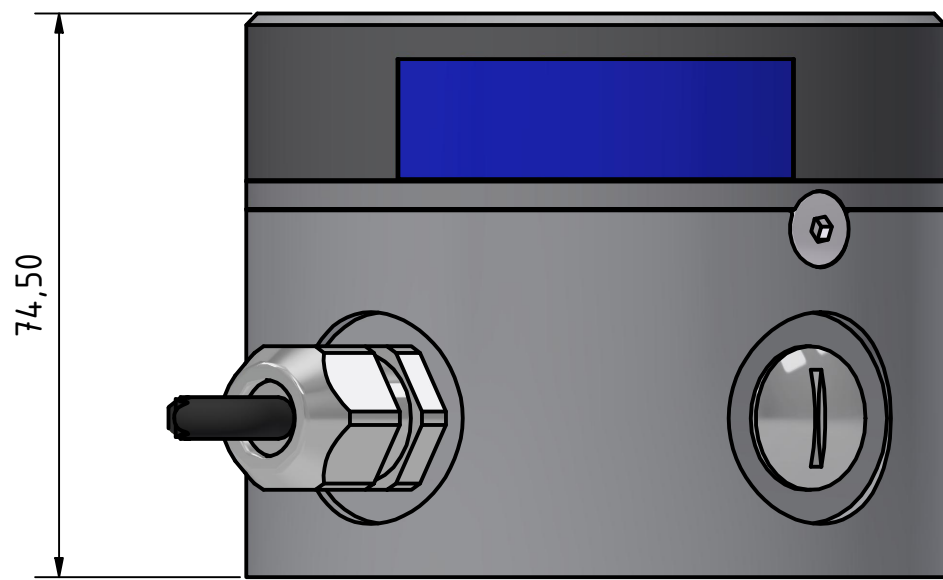




TITLE: 301-140-RPM Panama Steering Light, dimmable, on a 400-034 Promount base, cable down			
DRAWING NO.: 301-140-RPM-BA	REV. NO.: 1	SIZE: A3	DRAWN BY: Thomas
SCALE: 1 : 1	TOLERANCES: DS/ISO 2768-f	REVIEWED BY:	CREATION DATE: 29-10-2021
MATERIAL DESCRIPTION: (20µ) Silver anodized according to EN ISO 7599 (50µ) Black anodized according to MIL-A 8625F			
This Drawing, and the information within, is the property of Lopolight ApS and may not be used in any form without express permission there from. Lopolight reserves the right to change this drawing and assumes no liability for the information communicated herein. Use of dimensions and other information in this drawing is at the users own risk.			

LOPOLIGHT

Lopolight ApS
Bakkegaardsvej 513
DK-3050, Humlebaek
Denmark
www.lopolight.com
Tel: (+45) 32 48 50 30
info@lopolight.com



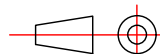
(1 : 2)

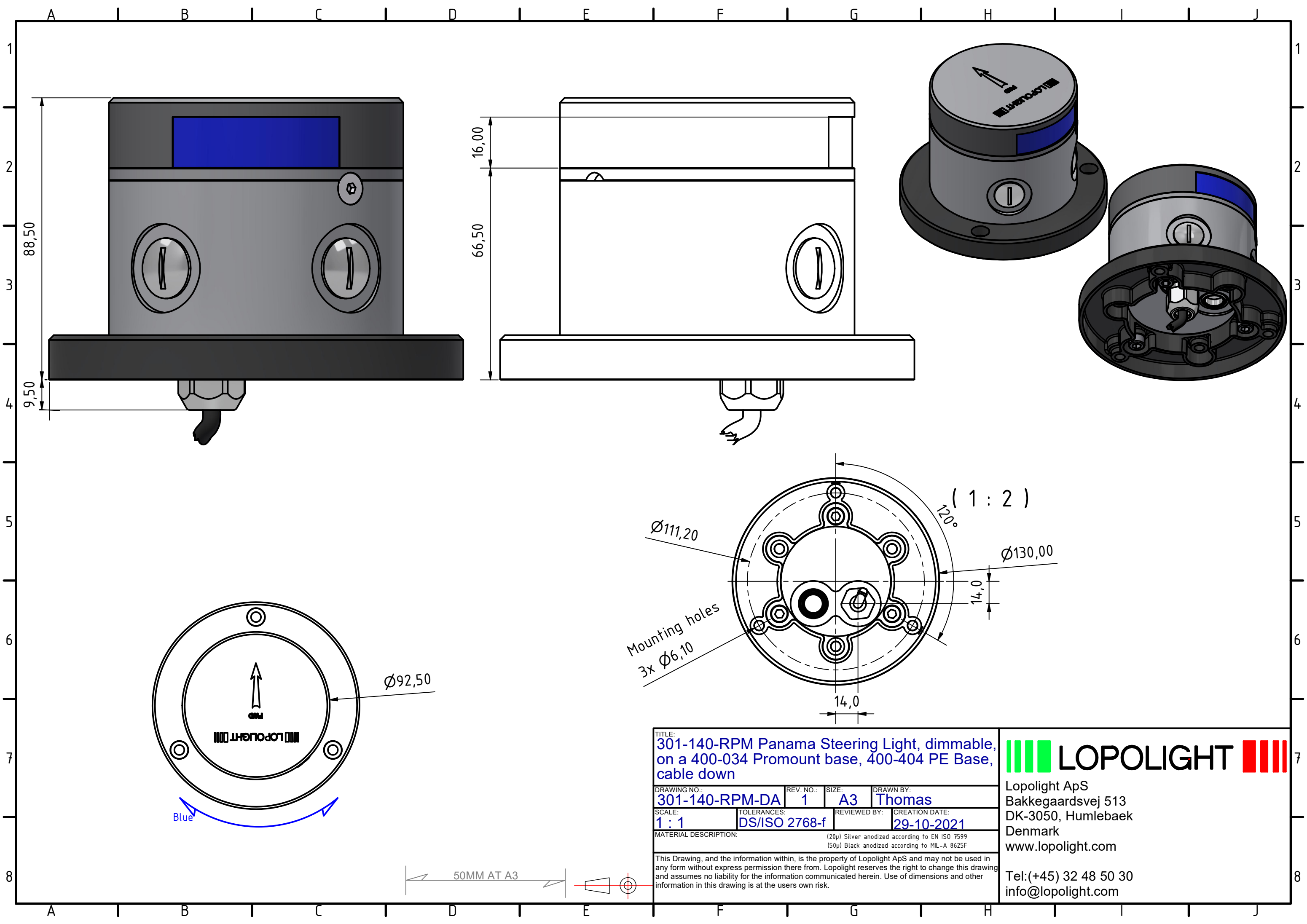
TITLE: 301-140-RPM Panama Steering Light, dimmable, on a 400-034 Promount base, cable Side			
DRAWING NO.: 301-140-RPM-CA	REV. NO.: 1	SIZE: A3	DRAWN BY: Thomas
SCALE: 1 : 1	TOLERANCES: DS/ISO 2768-f	REVIEWED BY:	CREATION DATE: 29-10-2021
MATERIAL DESCRIPTION: (20µ) Silver anodized according to EN ISO 7599 (50µ) Black anodized according to MIL-A 8625F			
This Drawing, and the information within, is the property of Lopolight ApS and may not be used in any form without express permission there from. Lopolight reserves the right to change this drawing and assumes no liability for the information communicated herein. Use of dimensions and other information in this drawing is at the users own risk.			



Lopolight ApS
Bakkegaardsvej 513
DK-3050, Humlebaek
Denmark
www.lopolight.com
Tel: (+45) 32 48 50 30
info@lopolight.com

50MM AT A3





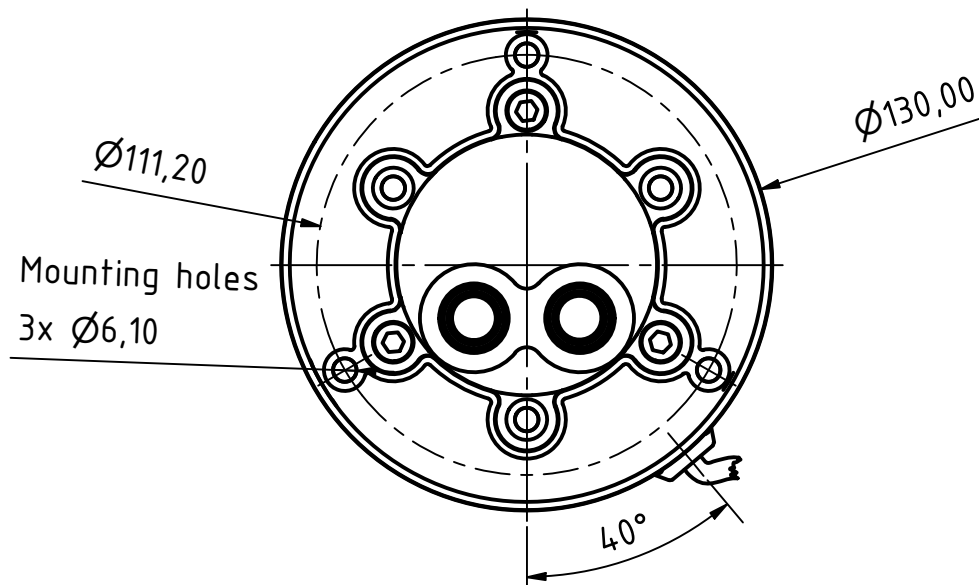
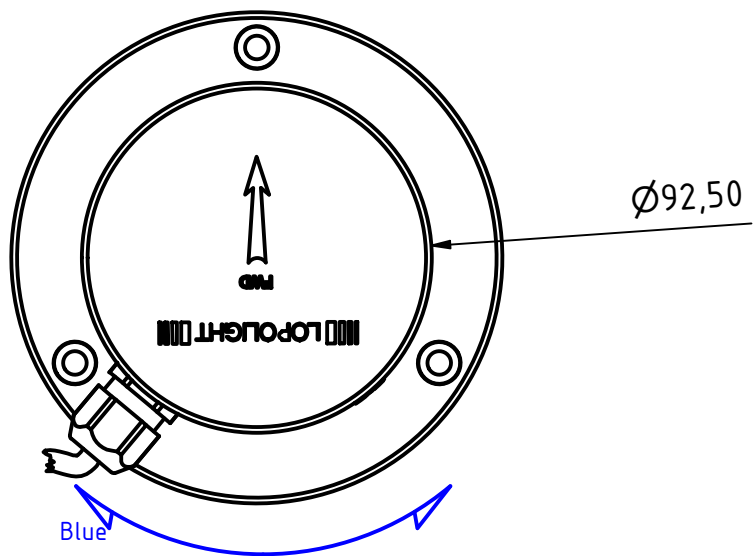
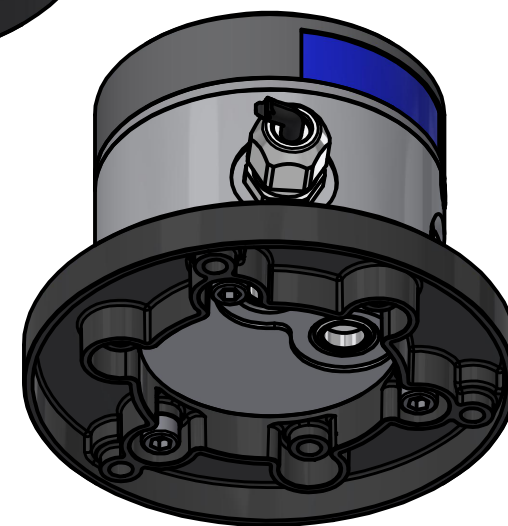
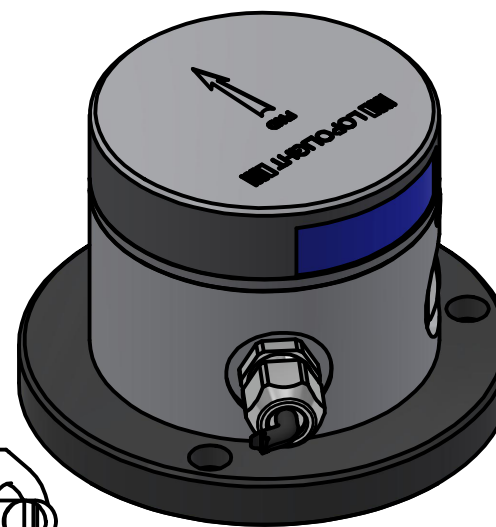
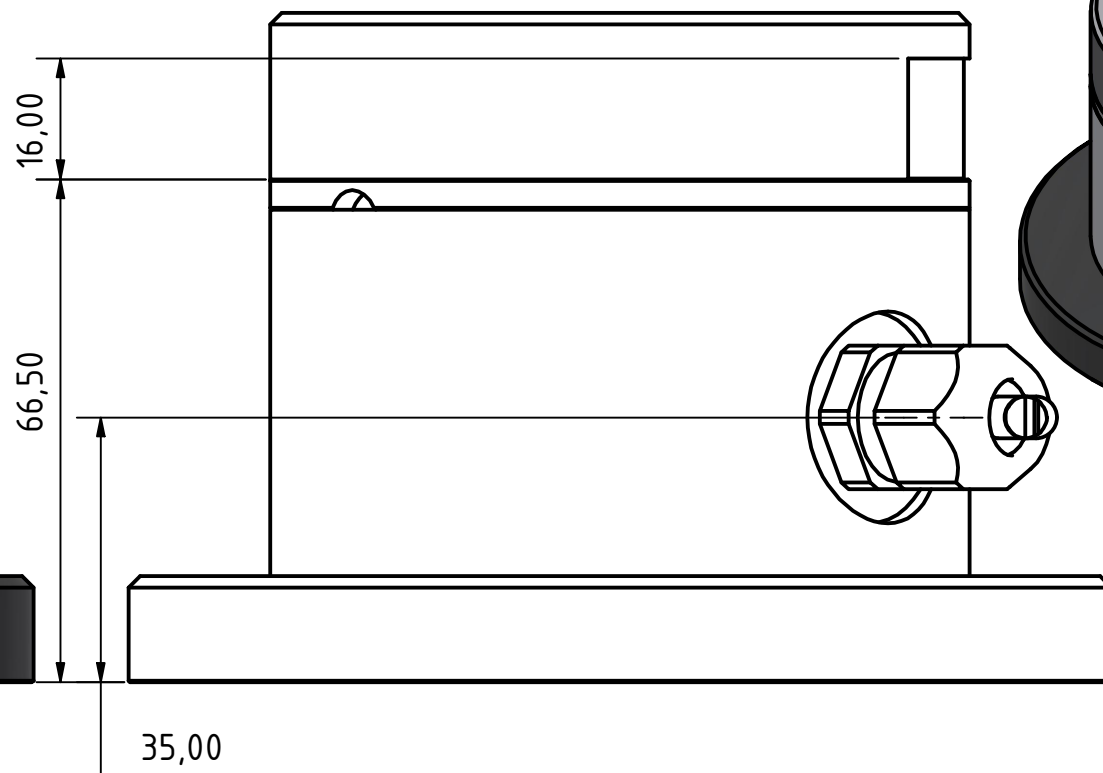
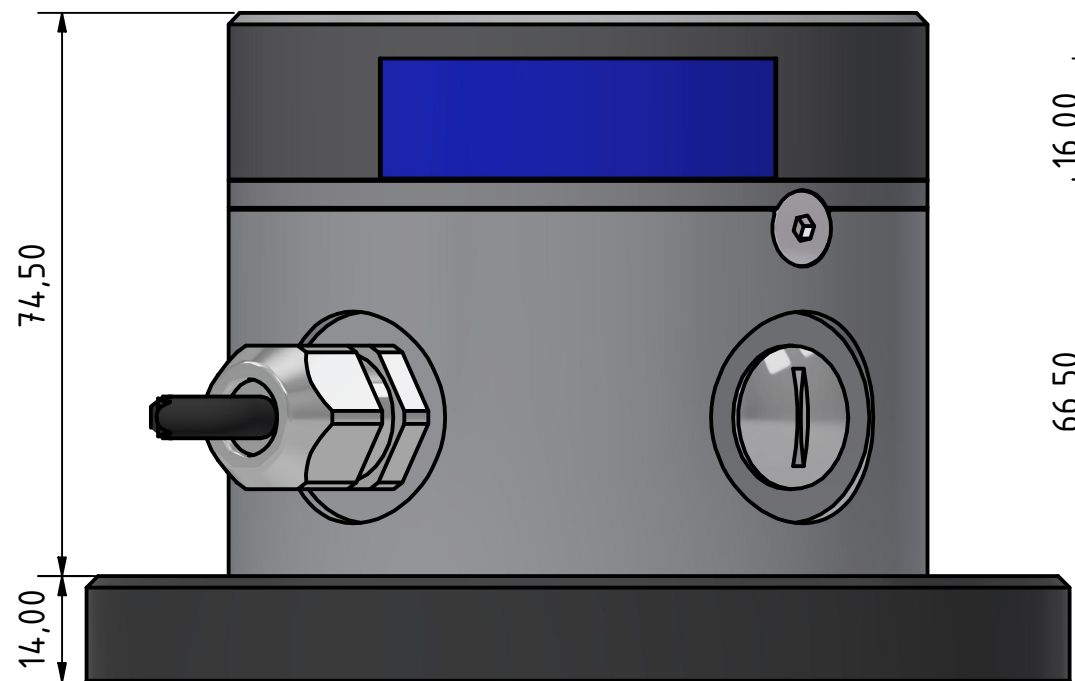
TITLE:
301-140-RPM Panama Steering Light, dimmable,
on a 400-034 Promount base, 400-404 PE Base,
cable down

DRAWING NO.: 301-140-RPM-DA	REV. NO.: 1	SIZE: A3	DRAWN BY: Thomas
SCALE: 1 : 1	TOLERANCES: DS/ISO 2768-f	REVIEWED BY:	CREATION DATE: 29-10-2021
MATERIAL DESCRIPTION: (20µ) Silver anodized according to EN ISO 7599 (50µ) Black anodized according to MIL-A 8625F			
This Drawing, and the information within, is the property of Lopolight ApS and may not be used in any form without express permission there from. Lopolight reserves the right to change this drawing and assumes no liability for the information communicated herein. Use of dimensions and other information in this drawing is at the users own risk.			

LOPOLIGHT

Lopolight ApS
Bakkegaardsvej 513
DK-3050, Humlebaek
Denmark
www.lopolight.com

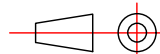
Tel: (+45) 32 48 50 30
info@lopolight.com

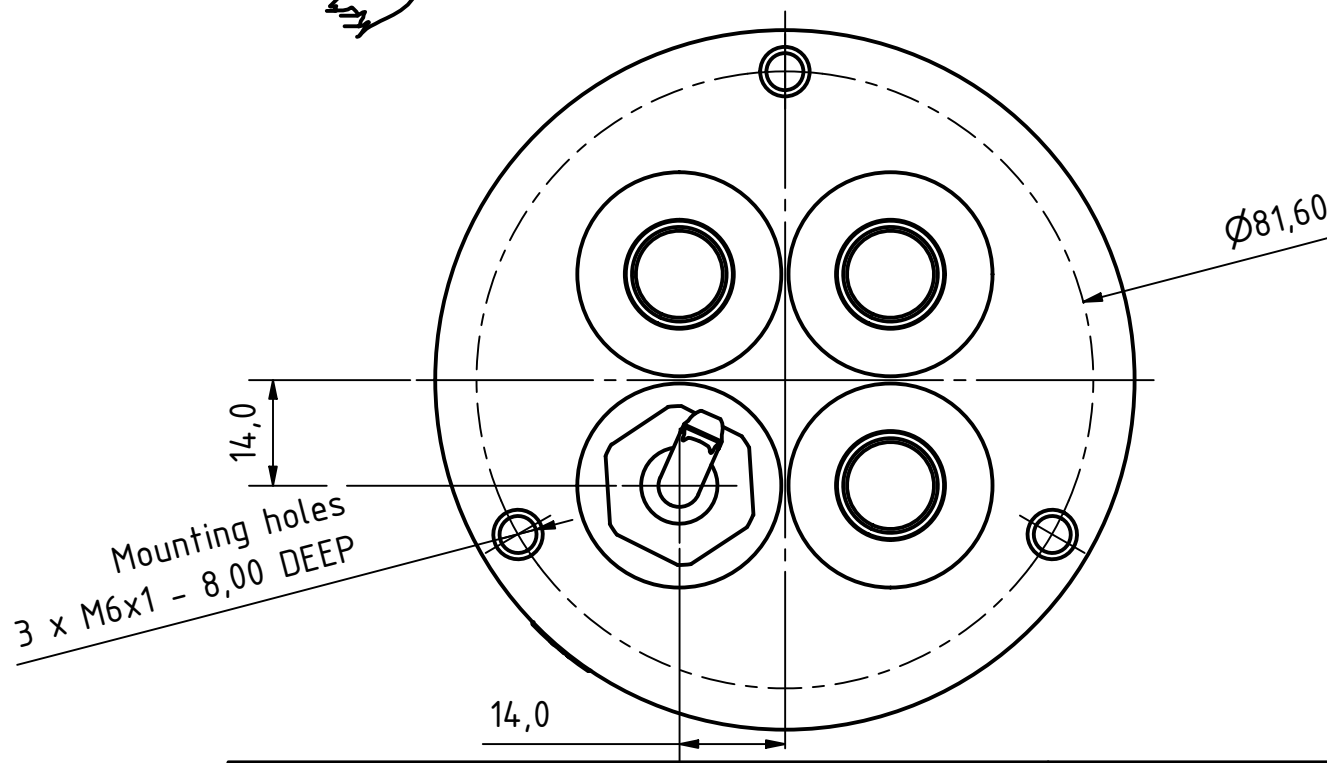
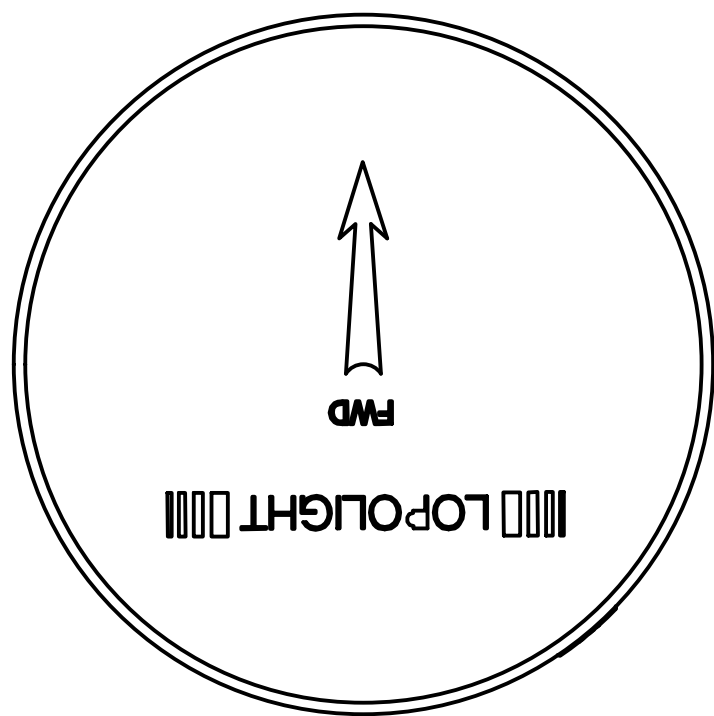
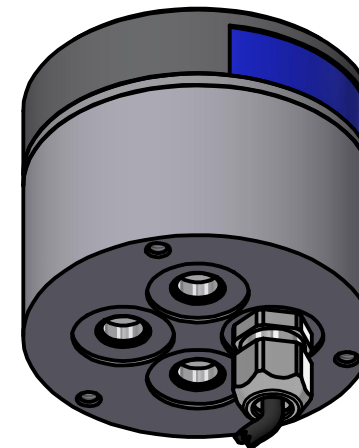
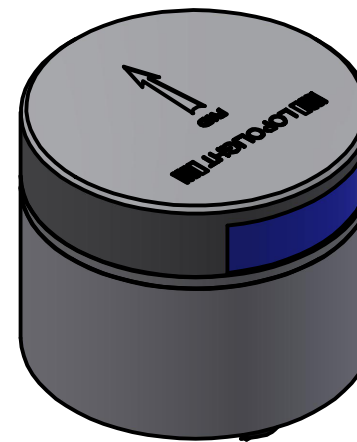
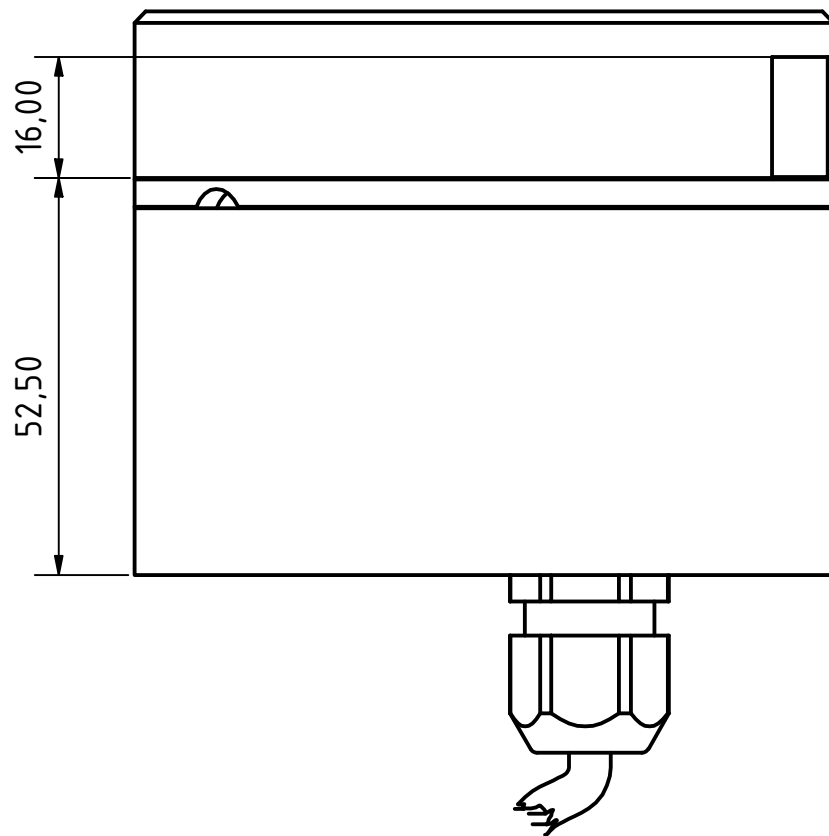
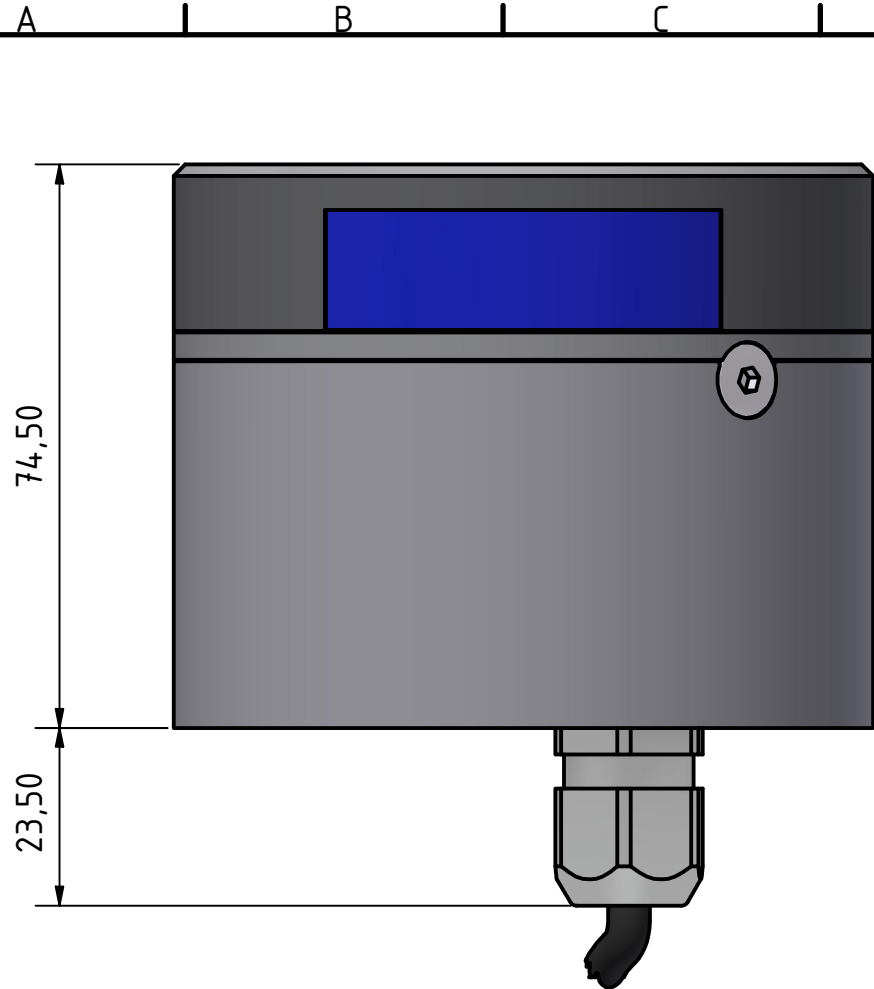


TITLE: 301-140-RPM Panama Steering Light, dimmable, on a 400-034 Promount base, 400-404 PE Base, cable side			
DRAWING NO.: 301-140-RPM-EA	REV. NO.: 1	SIZE: A3	DRAWN BY: Thomas
SCALE: 1 : 1	TOLERANCES: DS/ISO 2768-f	REVIEWED BY:	CREATION DATE: 29-10-2021
MATERIAL DESCRIPTION: (20µ) Silver anodized according to EN ISO 7599 (50µ) Black anodized according to MIL-A 8625F			
This Drawing, and the information within, is the property of Lopolight ApS and may not be used in any form without express permission there from. Lopolight reserves the right to change this drawing and assumes no liability for the information communicated herein. Use of dimensions and other information in this drawing is at the users own risk.			

LOPOLIGHT

Lopolight ApS
Bakkegaardsvej 513
DK-3050, Humlebaek
Denmark
www.lopolight.com
Tel: (+45) 32 48 50 30
info@lopolight.com



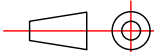


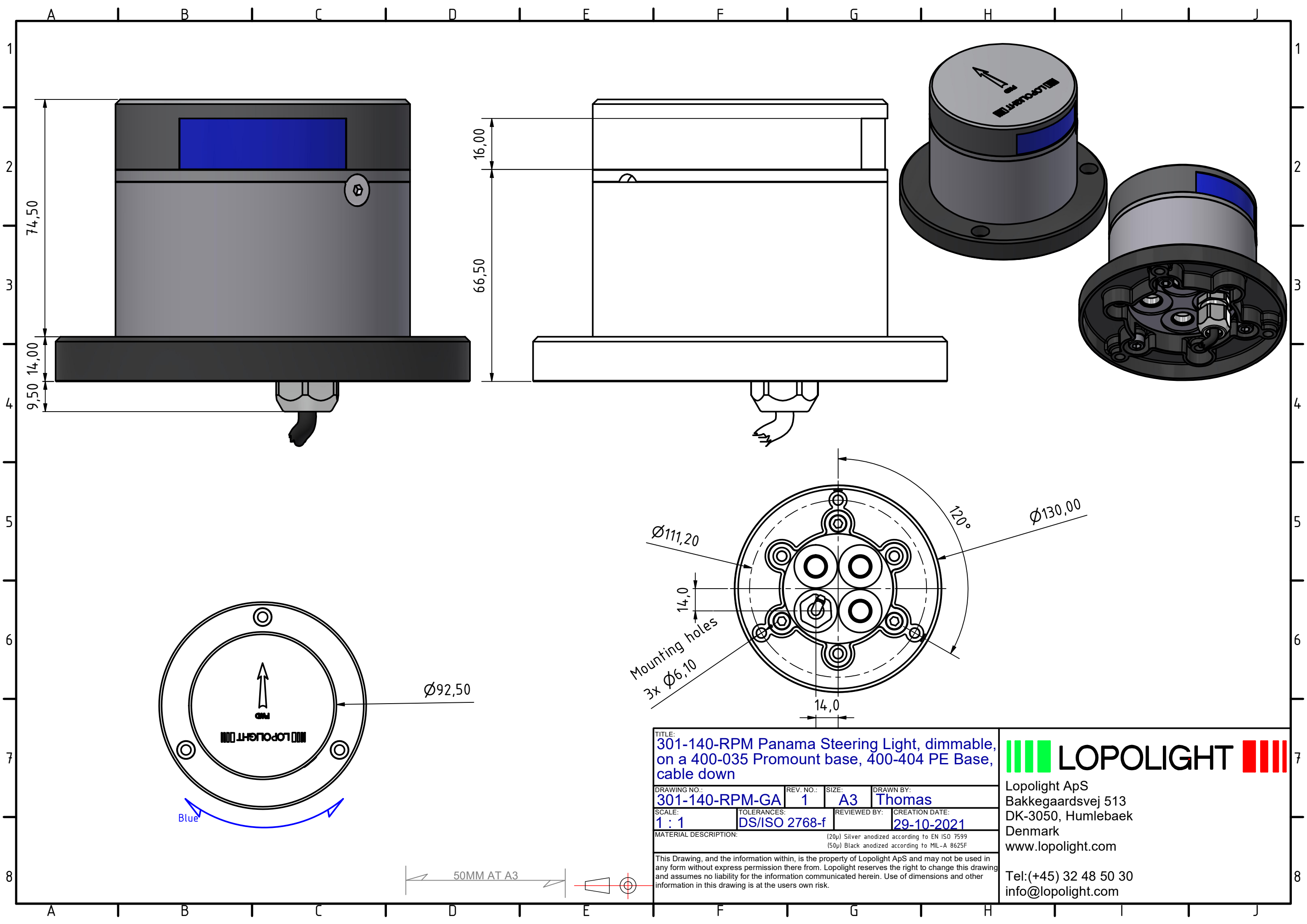
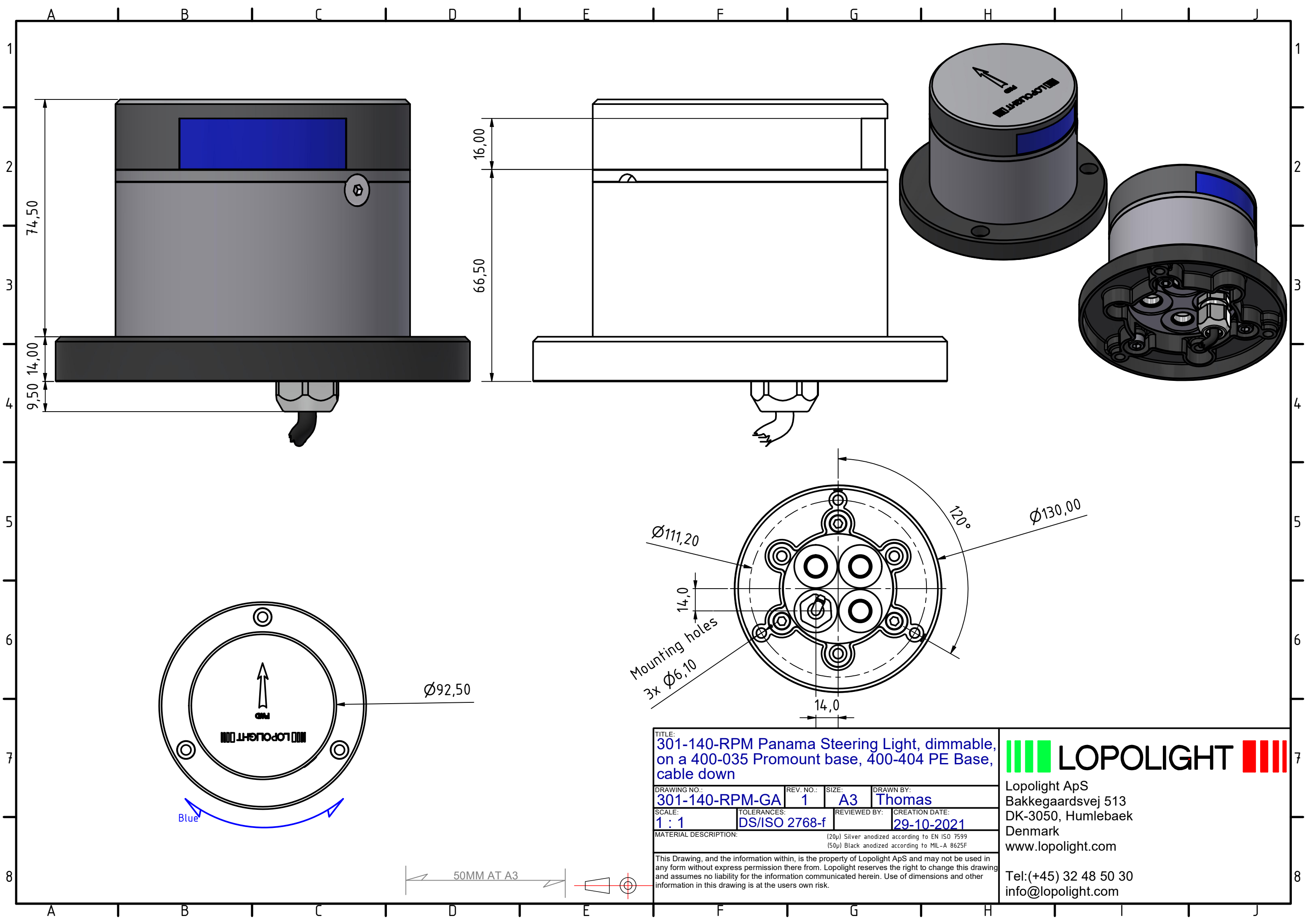
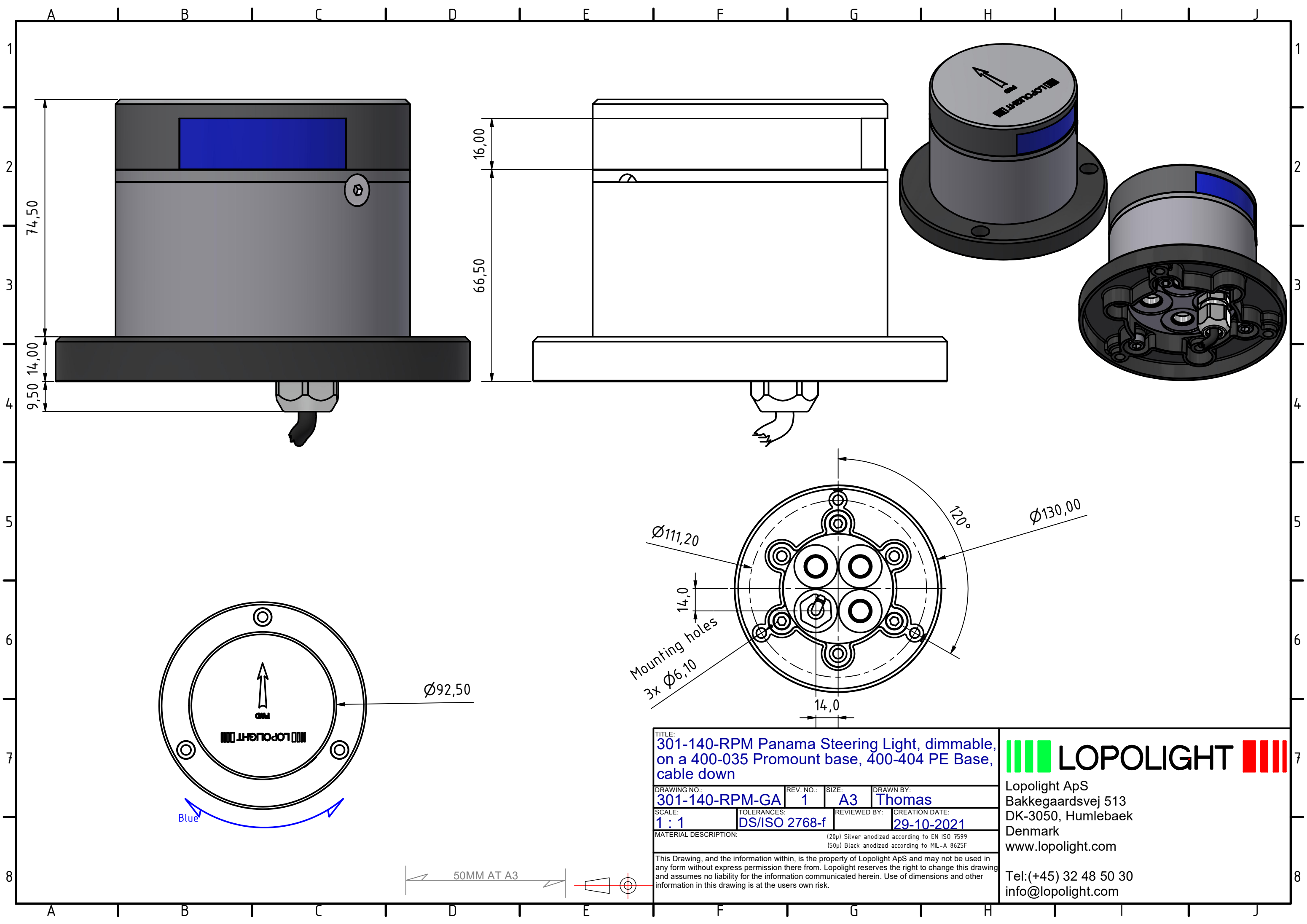
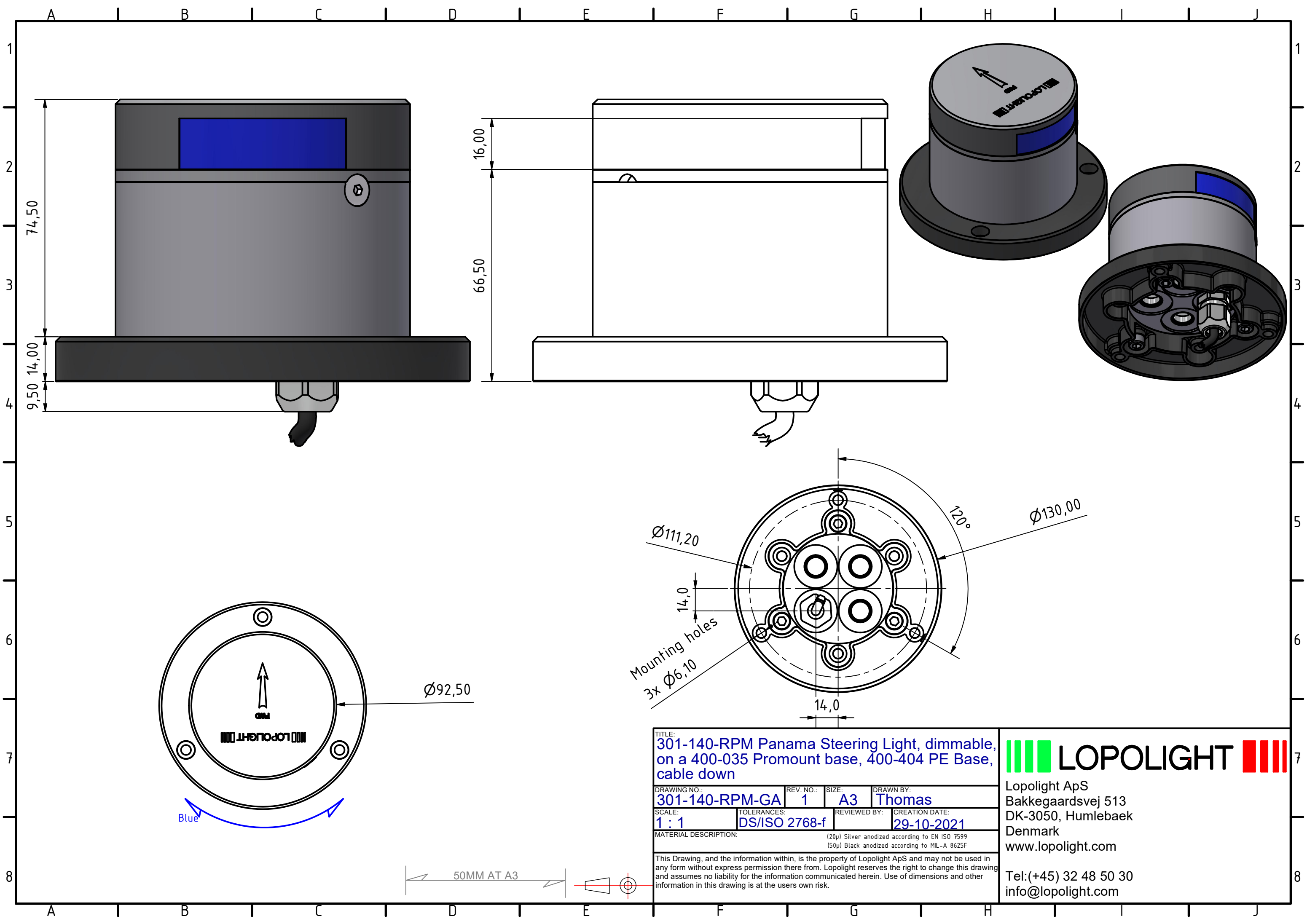
TITLE: 301-140-RPM Panama Steering Light, dimmable, on a 400-035 Promount base, cable down			
DRAWING NO.: 301-140-RPM-FA	REV. NO.: 1	SIZE: A3	DRAWN BY: Thomas
SCALE: 1 : 1	TOLERANCES: DS/ISO 2768-f	REVIEWED BY:	CREATION DATE: 29-10-2021
MATERIAL DESCRIPTION: (20µ) Silver anodized according to EN ISO 7599 (50µ) Black anodized according to MIL-A 8625F			
This Drawing, and the information within, is the property of Lopolight ApS and may not be used in any form without express permission there from. Lopolight reserves the right to change this drawing and assumes no liability for the information communicated herein. Use of dimensions and other information in this drawing is at the users own risk.			

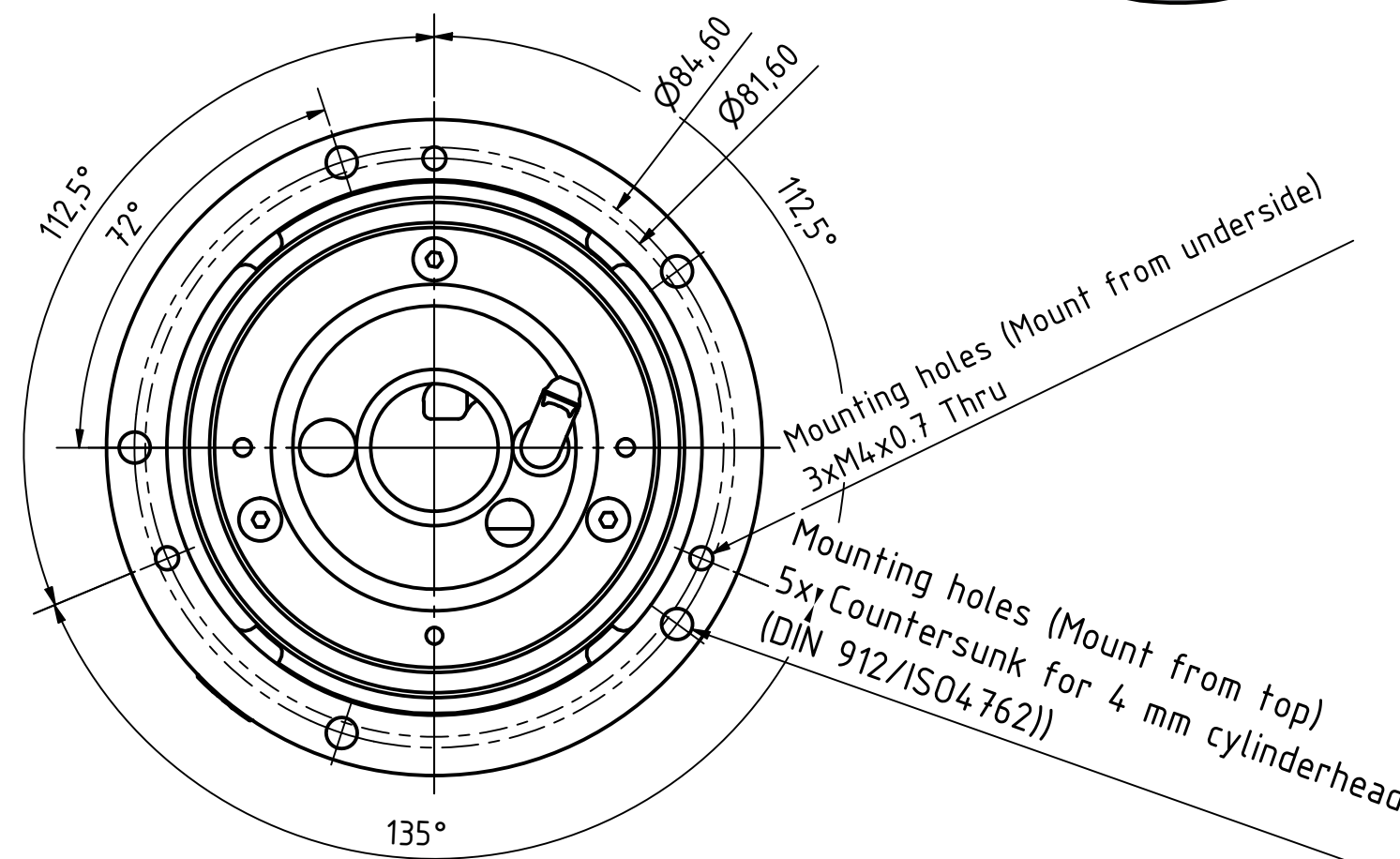
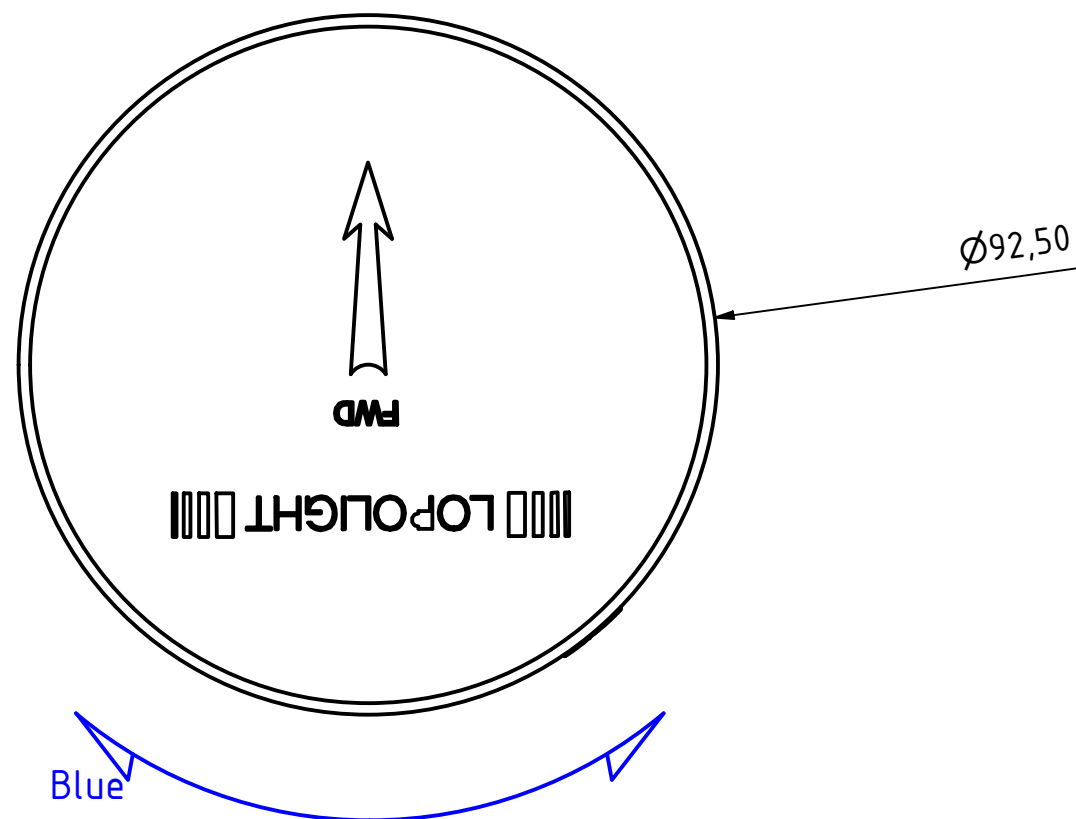
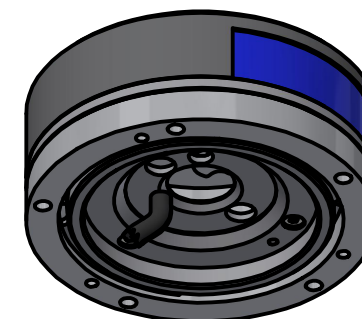
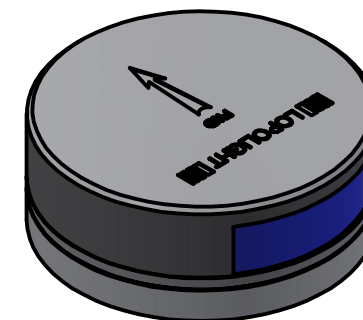
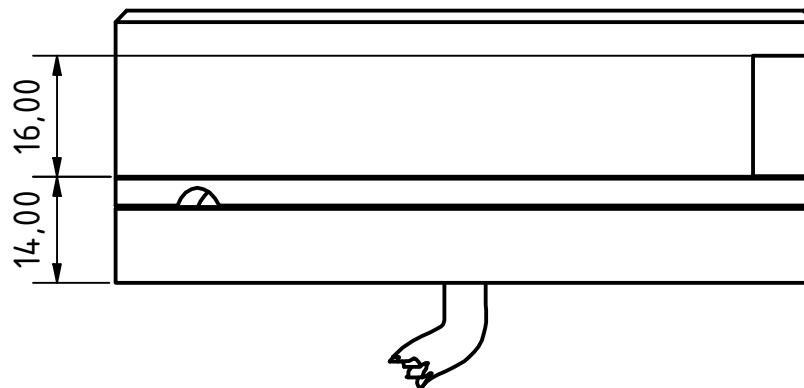
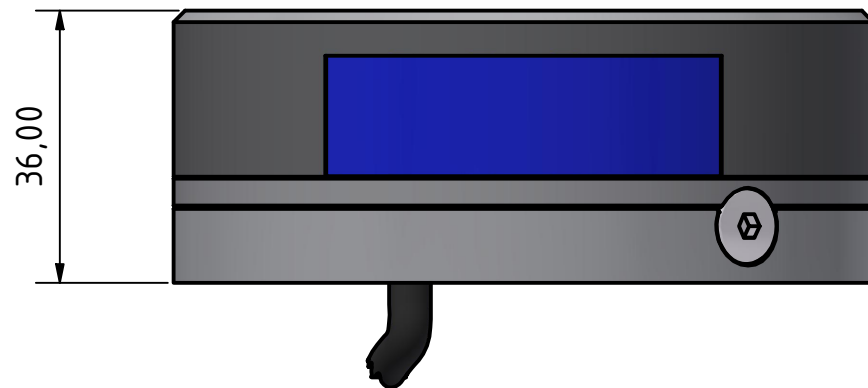
LOPOLIGHT

Lopolight ApS
Bakkegaardsvej 513
DK-3050, Humlebaek
Denmark
www.lopolight.com

Tel:(+45) 32 48 50 30
info@lopolight.com







TITLE: 301-140-RPM Panama Steering Light, dimmable, on a 400-036 Ultra low profile base			
DRAWING NO.: 301-140-RPM-HA	REV. NO.: 1	SIZE: A3	DRAWN BY: Thomas
SCALE: 1 : 1	TOLERANCES: DS/ISO 2768-f	REVIEWED BY:	CREATION DATE: 29-10-2021
MATERIAL DESCRIPTION: (20µ) Silver anodized according to EN ISO 7599 (50µ) Black anodized according to MIL-A 8625F			
This Drawing, and the information within, is the property of Lopolight ApS and may not be used in any form without express permission there from. Lopolight reserves the right to change this drawing and assumes no liability for the information communicated herein. Use of dimensions and other information in this drawing is at the users own risk.			

**LOPOLIGHT**

Lopolight ApS
Bakkegaardsvej 513
DK-3050, Humlebaek
Denmark
www.lopolight.com

Tel:(+45) 32 48 50 30
info@lopolight.com

