

LOPO
LIGHT



NEWS

DECKLIGHTS



WELCOME TO THE LATEST UPDATE FROM LOPOLIGHT.

The 400-22x is a powerful, dimmable, quad-colour deck/interior light, that enables selection of the most suitable light colour for a given task.

The colour selection enables red light for night use, warm white, medium white and cold white for evening/daytime use.

The flush mount version only requires 11mm depth space behind the light. The unit fulfills the most demanding requirements for limitation of electrical noise (EMC) and will not disturb any other electronics – including all radio receiving equipment used in maritime environment. Typical use: Illumination of wheelhouse and outdoor areas in harsh environments, including “often flooded areas”.



PRODUCT DATA



Led color:

White 2700K (Warm white)
Medium white 3450K (mix of 2700+4200)
White 4200K (Cold white)
Red 625 nm

Intelligent thermal management:

The 400-22x provides automatic thermal control, meaning that the power will gradually be reduced if the light-housing is warmer than 48 °C.

Typical temperature raise:

25 °C. over ambient (mounted on non-thermal dissipative surface)

Installation considerations:

The unit can be installed in any position and on any surface.
If possible, the unit should be mounted on a heat dissipating surface, that will enable constant high-power (4.8W) output.

Power consumption:

~4.8W (housing temp < 48 °C.)
~3W (housing temp > 48 °C.)

Power-supply:

Any voltage between 10.0V and 32.0V
Current consumption @40 °C. housing:
All colours: 200mA@24V / 390mA@12V

Inrush current:

1.5 A (2ms)

Fusing:

Suggested external fuse: 300 mA slow-blow (per light in system)

PWM dimming:

The dimming input can be controlled by PWM signals. PWM dimmer must refer to same power-source as the light group.

Light output:

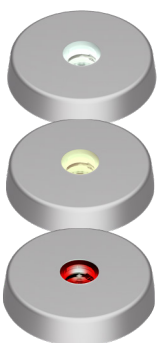
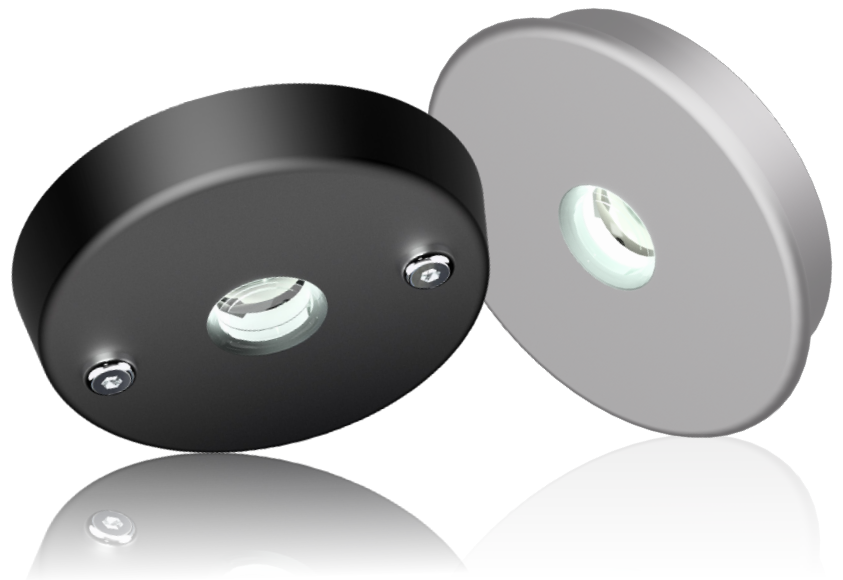
50 Cd, 30 deg

Environmental:

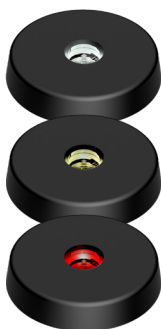
EMC (exceeding) EN-60945
Waterproof to IP67
Max ambient temp.: +60 °C.
Min ambient temp: -30 °C.
Max storage temp: +70 °C.
Expected lifetime:
+40.000 hours

Mil version:

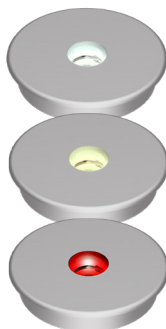
EMC: 461F (max 5dBuV/m)



P/N 400-220



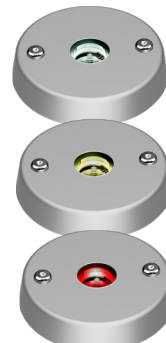
P/N 400-220-B



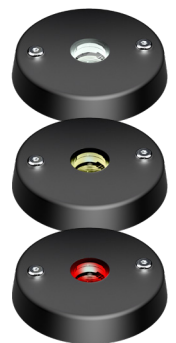
P/N 400-221



P/N 400-221-B



P/N 400-222



P/N 400-222-B