



Industrial Line

speich





SPEICH offers reliable and performance equipment that is easy to maintain and service. A rapid delivery and a long-term spare part service is guarantee to satisfy the production continuity needs of our customers.

SPEICH experience includes: land-based oil rigs, offshore oil platforms, airport control tower, cranes drillers cabins, agricultural machinery, industrial machinery.



SPEICH provides durable wiper and washer systems suitable for Heavy Industrial machinery and vehicles exposed to harsh environments in a wide range of climates and operating conditions.



The Products Choice



How to choose the right product?

There is no a unique correct choice for an industrial windscreen wiper

An industrial windscreen wiper system is fully custom-made for each applications. SPEICH is able to offer a wide range of wiper systems that will meet all installation requirements.

The system design and production is made under strictly quality criteria in order to respect the supply management plan and deliverables requirements compliance.

The choice depends on many factors:

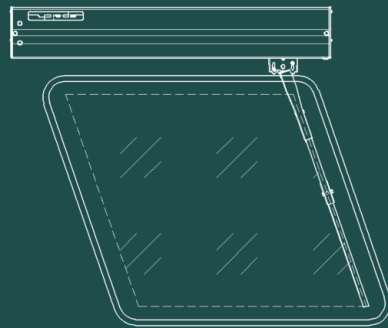
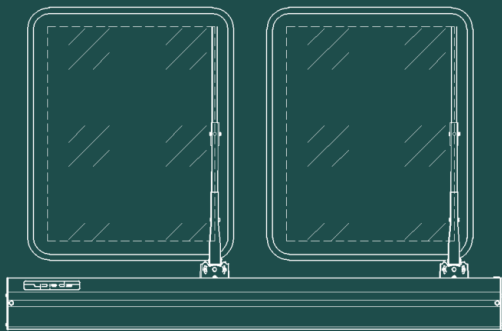
- **SWEPT AREA REQUIREMENTS**
- **CUSTOMER REQUIREMENTS**
- **FORM AND SIZE OF THE SCREEN**
- **MAXIMUM VEHICLE SPEED**

Our team of design engineers will supply the best advice and assistance in order to achieve considerable savings in installation costs, the best window clearing efficiency, the best reliable, available, maintainable and safe product.

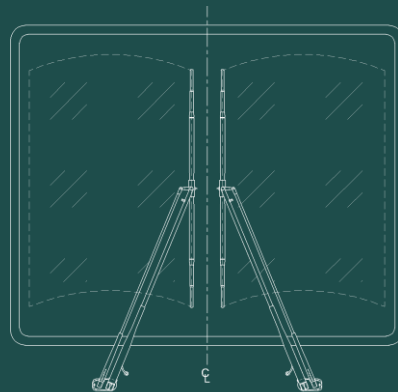


From standard flat screen vehicles to curved screens, our systems are designed to meet all the necessary customer requirements.

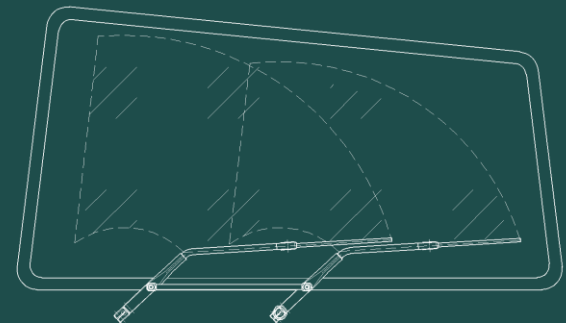
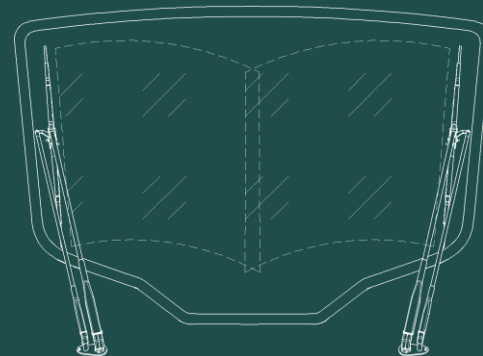
Single and double arm straight line fully electrical wiper system



Single and double arm pantograph fully electrical wiper systems

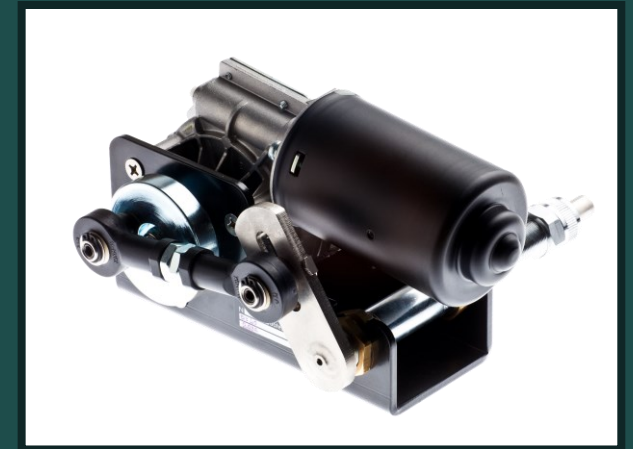


Single and double arm pendulum fully electrical wiper systems



Wiper Motors

- Our **voltage** ranges allow us to be compatible with installation targets: 24Vdc, 110Vac, 220Vac.
- Superior components are used to ensure **reliable** and **long-lasting** systems
- Ingress protection: **IP55 ÷ IP67** depending motor installation position
- **One** or **two speed** mode available
- **Self-parking position**



Wiper Arms and Blades

- Pantograph and pendulum arms, flat and articulated blades are available.
- Maximum **performance**
- Wiper arms springs pressures are carefully selected to ensure **smooth operation**
- All arms constructed out of non-corrosive materials stainless steel **AISI 316**
- Two directional integrated **wash jets** used to maximize screen washing coverage
- Blade length is selected to suit the application requirements
- Bolted blade fastening for a **secure fixing**
- Wiper arms shapes, lengths and aesthetic finishes are designed to the application requirements



CONTROL SYSTEMS

SPEICH offers fully integrated control systems to enable all functionality requirements.

SPEICH provides the connections to suit your system requirements and custom-made control panel.

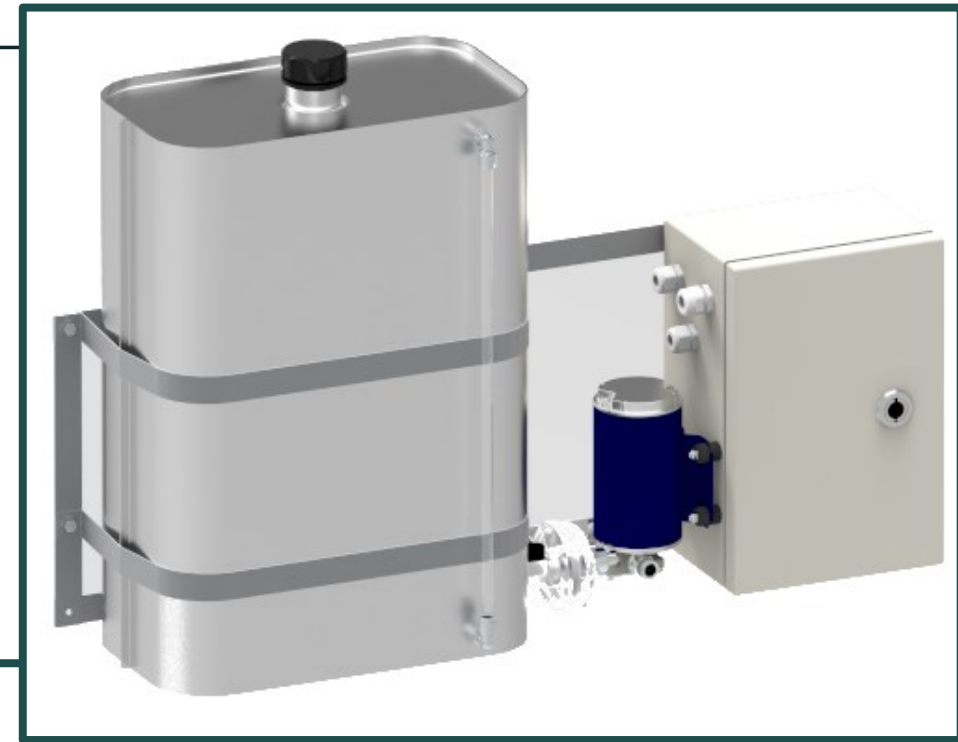
Synchronization and wash cycles are built into



SPEICH offers complete **washer systems** and relative **accessories** which are designed to meet all the necessary customer requirements.

Our washing systems include:

- Custom-made stainless steel **water tanks** manufactured to suit your space envelope.
- **Electrovalves** and **fittings**
- Fully integrated wash systems including **pump**, stainless steel **water tank**, **electronic** and visual **level sensors**. These systems can be automatic or manual refill
- **Wash hose kits** with various adaptors for securing hoses.
- **Bulkhead connectors** and cab mounted spray nozzles.



Washer System And Accessories

PRODUCTION AND TESTING

The **in-house production** of most components is part of SPEICH policy which provides several advantages:

- Full quality control manufacturing and control plans
- Very flexible production
- Short lead-time
- Long-term spare parts availability
- Low obsolescence risk

Each product project is validated after dedicated testing, in our test room or a third-party laboratory, and first article inspection.

Typical testing and compliance we achieve for our wiper systems are:

- EN50155 / IEC 60945 compliance
- Environmental conditions and Vibration to EN50125-1
- Endurance and performance testing
- Salt spray testing
- IP Degree of Protection

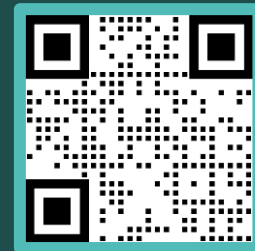
- Full quality control
- Flexible production
- Short lead-time
- Long term spare parts availability
- Low obsolescence risk





International Sales Network

A complete list of our global service and distribution network is available on our web site:



www.speich.com

SPEICH